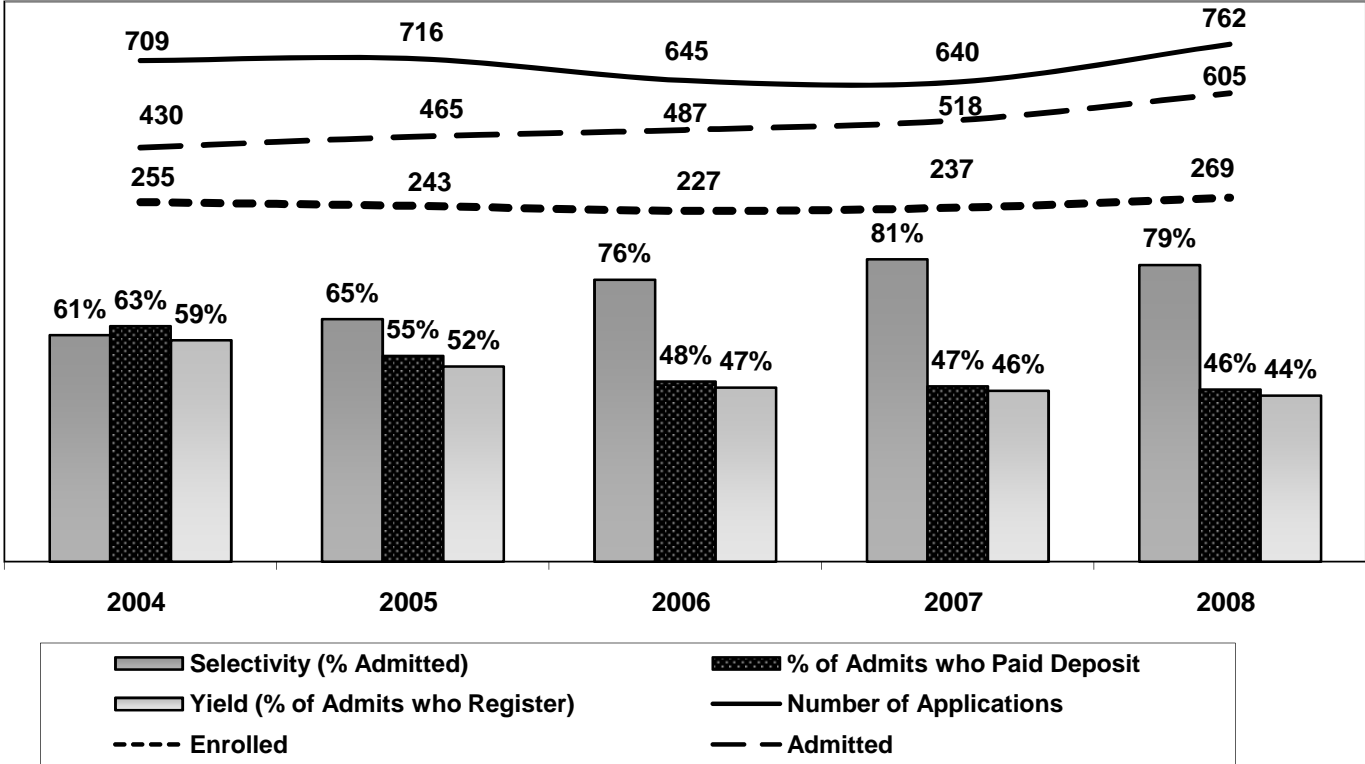


1.1 ADMISSIONS ACTIVITIES - GRADUATES
(DATA REPORTED FOR FALL TERMS)

OVERALL GRADUATE ADMISSIONS ACTIVITIES



1.1 ADMISSIONS ACTIVITIES BY PROGRAM - GRADUATES
(DATA REPORTED FOR FALL TERMS)

	2004	2005	2006	2007	2008
ART					
Number of Applications	132	103	95	90	85
% Admitted	17%	19%	21%	30%	29%
% Enrolled	52%	60%	60%	41%	48%
BIOCHEM/MOLECULAR BIO					
Number of Applications					1
% Admitted					100%
% Enrolled					0%
DANCE					
Number of Applications	30	28	29	26	41
% Admitted	60%	64%	69%	81%	56%
% Enrolled	50%	44%	40%	48%	43%
EDUCATION					
Number of Applications	162	160	151	126	183
% Admitted	86%	74%	94%	100%	95%
% Enrolled	60%	61%	52%	50%	51%
ENGLISH					
Number of Applications	142	177	137	137	154
% Admitted	68%	65%	84%	83%	86%
% Enrolled	52%	46%	31%	40%	38%
ICS/NH					
Number of Applications	4	2	6	7	4
% Admitted	50%	100%	100%	100%	100%
% Enrolled	100%	100%	67%	57%	0%

1.1 ADMISSIONS ACTIVITIES BY PROGRAM - GRADUATES (CONT.)
 (DATA REPORTED FOR FALL TERMS)

	2004	2005	2006	2007	2008
MBA					
Number of Applications	40	47	51	45	60
% Admitted	90%	87%	86%	98%	97%
% Enrolled	78%	76%	68%	59%	60%
INFANT MENTAL HEALTH					
Number of Applications					12
% Admitted					67%
% Enrolled					63%
MPP					
Number of Applications				17	23
% Admitted				88%	87%
% Enrolled				60%	50%
MUSIC					
Number of Applications	63	56	56	50	53
% Admitted	57%	70%	73%	64%	74%
% Enrolled	56%	36%	49%	53%	49%
PRE-MED					
Number of Applications	130	118	106	124	134
% Admitted	57%	73%	78%	87%	81%
% Enrolled	59%	52%	36%	36%	30%
SPECIAL					
Number of Applications	6	12	16	14	12
% Admitted	100%	92%	100%	93%	100%
% Enrolled	100%	55%	63%	69%	58%